



2015 Annual Report

## Table of Contents

|   |       |
|---|-------|
| Mission Statement.....                                  | 2     |
| Board Chair and President's Report.....                 | 3-4   |
| Northeast Child Development Center.....                 | 5-6   |
| Youth Development and be@school Programs.....           | 7-8   |
| Youth Employment Programs.....                          | 9-10  |
| Camp Bovey.....   | 11    |
| Menlo Park Academy.....                                 | 12    |
| Adult Employment & Training.....                        | 13-14 |
| Family Services.....                                    | 15-16 |
| Empowering Vital Aging.....                             | 17-18 |
| Senior Transportation.....                              | 19    |
| Senior Community Service Employment Program.....        | 20    |
| Metro Food Programs.....                                | 21-22 |
| Adult Day at Friendship Center.....                     | 23-24 |
| Events and Volunteers.....                              | 25-28 |
| Financials and Demographics.....                        | 29-30 |
| Board of Directors and Committees.....                  | 31-32 |
| Individual Donors.....                                  | 33-35 |
| Corporate & Foundation Donors.....                      | 36-37 |
| Community Organizations, Government & Faith Donors..... | 37    |

## **MISSION STATEMENT**

To foster the healthy development and well being of individuals and families while strengthening our diverse community.

## **STATEMENT OF INCLUSIVENESS**

East Side Neighborhood Services, Inc. affirms the right of every person to participate in employment without regard to race, color, religion, sex, national origin, age, sexual orientation, disability, disabled veterans, or Vietnam era veteran status, marital status, with regard to public assistance or membership/activity in a local human rights commission, and in accordance with all applicable laws, directives, and regulations of the federal and local governing bodies.

## **LIVING STATEMENT ON RESPECT**

### **Dignity**

Every human being has inherent worth and deserves to be treated respectfully.

### **Value Differences**

Value the uniqueness of each person without bias.

### **Personal Responsibility**

We are responsible for our actions toward others and for informing others, or taking appropriate action, when our dignity has been violated.

# 2015 Board Chair & President's Report

We are so grateful to the East Side Community, individuals, businesses, corporations and fraternal organizations for 100 years of working together to improve the lives of the residents of our metropolitan area. Our thanks to everyone who gave of their time, energy, and support.

When our agency began on January 20th 1915, we were founded to bring together divergent ethnic and cultural communities. Over the years we have evolved to meet the ever changing needs of individuals and families in our community. We continue to build upon the work of previous generations to see that needs are met, youth thrive, families are assisted and our seniors are helped to stay in their homes and the greater community for as long as possible. We take great pride in making a difference every day to effectively respond to our ever changing communities.

At our 100th Anniversary Gala this past September at Nicollet Island it was clear that we impact people's lives in positive ways. The nearly 350 attendees had the opportunity to hear from Past City Council Member and Park Commissioner, Walter Dziedzic; Current Hennepin County Sheriff and Past Camp Bovey Camper, Rich Stanek; Caroline Arnold, daughter of Les Scheaffer a past ESNS Executive Director; Past ESNS Board Member and Camp Bovey Staff Member, Jack Novak; Former Minneapolis City Council Member, Diane Hofstede, along with NE Businessman, Andy Zurbey and many others. It was a great representation of the impact that ESNS has had in our neighbor's lives for 100 years. We were captivated by the joy, humor, and impact that the stories and speakers represented. We appreciated everyone's participation in the celebration.

During this banner year we had a goal of raising \$250,000 to solve some current issues and find resolution to foreseen challenges in the next few years. I am pleased to report that we have raised \$235,735 by 264 donors. Through donations from the Lions Club of Northeast Minneapolis, East Minneapolis Exchange Club, and the Northeast Minneapolis Kiwanis Club a new youth van has been purchased for our After School Programs and Camp Bovey. A senior transportation vehicle was purchased to replace



a deteriorating van. We are currently working on repairs to our gym floor and walls, replacement of the agency phone system, lawn equipment, security, and technology among other needs. We'll keep you informed.

The year of 2015 also saw expansion in various service areas: our Mobile Food Shelf has expanded to serve 37 Senior High Rises; we will be moving our mobile food shelf facility to a new location due to the Metropolitan Council's pending purchase of our current site for their purposes; we have replaced three agency vehicles due to wear and tear; our senior services has expanded with a State of Minnesota grant for our Empowering Vital Aging program (EVA); we have completed a 20 year regulatory grant with the City of Minneapolis for our Northeast Neighborhood Early Learning building in partnership with Neighborhood Health Source; a new youth program entitled "FutureConnect" was supported by Opus Corporation and the Department of Employment and Economic Development to help kids transition from school to work or post-secondary educational options; Menlo Park Academy graduated 16 Seniors, among many other accomplishments throughout the agency.

We are grateful to be located in the caring communities of the East Side. We believe that our predecessors would be proud of both our performance on meeting needs and continued support by our neighbors and trustees to see that ESNS fulfills its mission in an effective and responsible manner. We thank everyone for their help along the way.

Steve Dunphy,  
Board Chair

Bill Laden,  
President



# Northeast Child Development Center

Northeast Child Development Center (NECDC) offers quality early childhood education in preparation for kindergarten, and full day care for children between the ages of 6 weeks and 5 years. A top rated 4-star Parent Aware program and Nationally Accredited, NECDC improves access to primary education for children by providing its services to families from all income levels in a developmentally appropriate, anti-biased, literacy rich environment. NECDC ensures children are healthy and meet developmental milestones to be ready for kindergarten; supporting families in their efforts to provide the environment and relationships that promote positive development.

NECDC's early childhood education and child care staff are prepared and well trained to:

- Teach and model behavior for children which leads to age appropriate social/emotional, cognitive, language/literacy, and physical development.
- Provide assessments and set up education plans for children who do not demonstrate such development.
- Increase school readiness by providing parents with information and resources for children entering kindergarten.
- Encourage positive parenting techniques that enhance children's school readiness skills.

## Accomplishments/Highlights/Awards

- Served 77 children and 141 parents.
- 100% of enrolled families received community resource information when needing additional support either at the time of enrollment or during the course of the year.
- 89% of parent responses and parent participation in classroom and at home experiences showed an increase in parents practicing positive parenting techniques. Parents noted that modeling their child's teachers approach to redirection for behavior played a key role to how they began changing their approach at home.
- 87% of enrolled children achieved proficiency in communication, problem solving, gross and fine motor skills, and personal social development.
- 82% of enrolled children who did not demonstrate age appropriate development received intervention services.



## Partnerships and Collaborations

- Breck School
- Greater Twin Cities United Way
- Health Dimension Resources for Speech, Occupational and Physical Therapy
- Hennepin County Purchase of Service
- Hennepin County Well Child and Teen Program
- MACC Early Childhood Affinity Group
- Minneapolis Early Childhood Special Education Preschool Program
- Minnehaha Academy
- Minnesota Visiting Nurses Association
- The Church of St. Gerard
- TruStone Financial
- USDA



# Youth Development and be@school Programs

The ESNS Youth Development programs create a bridge between school, family, and community. Programs are strength-based and focus on increasing the 40 Developmental Assets identified by the Search Institute as crucial building blocks which contribute to a young person's wellbeing and long term success. Our intentional, evidence-based approach emphasizes a safe space for developing relationships, an enriching learning environment, opportunities for leadership, and healthy risk taking. Current research shows that consistent attendance in high-quality after school programs can close the achievement gap for youth by 5th grade (Pierce, K.M., Auger, A. and Vandell, D.L., 2013). Providing youth with opportunities for healthy risk taking and intentional relationship building mitigates risk and contributes to strong academic and social outcomes (Laurence Steinberg, PhD. and Abigail A. Baird, PhD., Howland Symposium: Trends in Adolescent Brain Development, April 2012).

## Programs

ESNS Youth Development Programs provide after school and summer programming at seven locations including five school-based and two community-based programs. Our team consists of 12 full-time and 12 part-time staff as well as over 50 interns and volunteers from St. Catherine University, University of St. Thomas, Adler Graduate School, Minneapolis Community & Technical College, and the University of Minnesota. Programs focus on a combination of academic skill building, enrichment, and social/emotional development. We provide literacy support, small group academic instruction, leadership development, work readiness skills, environmental education, relationship building, and parent engagement to meet the needs of each young person's individual needs.

The be@school Program serves youth ages 5-17 that have been referred to the Hennepin County Attorney's Office for too many absences from school. Our team engages with families to provide support around barriers to their children's success in school including facilitating communication with school and other support staff, providing referrals to community resources, and checking in with students on a regular basis about their attendance at school.





## Accomplishments/Highlights/Awards

- Added the be@school program to our department in February 2015 and expanded the program in the fall of 2015.
- Youth Development Programs earned a two-year extension of the 21st Century Community Learning Centers grant through the MN Department of Education.
- Received two special project grants: \$2000 from the Whole Kids foundation to expand our Youth Garden, and \$5000 from the Metropolitan Regional Arts Council (MRAC) to pair teaching artists with children during summer school to learn to work with clay.



## Partnerships and Collaborations

- Adler Graduate School of Psychology
- City of Minneapolis Step-Up Discover Program
- Cornerstone Gardens
- Edison High School
- Heritage Academy
- Inverted Arts
- MACC Alliance of Connected Communities
- Minneapolis Community & Technical College
- Menlo Park Academy
- Minneapolis Community Education
- Minneapolis Parks and Recreation
- Minneapolis Public Housing Authority
- Minneapolis Public Schools
- Minneapolis Television Network
- Minnesota Department of Education
- Pillsbury United Communities
- Phyllis Wheatley Community Center
- Pratt Community School
- St. Catherine University
- The Family Partnership
- University of Minnesota America Reads Program
- University of Minnesota Service Learning Program
- University of Minnesota Y-Mentors Program
- University of St. Thomas
- Venture Academy
- YMCA Beacons



# Youth Employment Programs

ESNS Youth Employment Programs assist youth and young adults ages 14-24 to identify their strengths, cultivate their career interests, and develop the work readiness skills they need to be successful in today's job market. Participants work individually with staff or in small groups to engage in goal setting, employment skills practice, career pathways exploration, and occupational skills training. Young people receive ongoing support from a consistent, caring adult to address challenges that create barriers to being successful in school and employment.

## Programs

The Youth Employment Program serves youth and young adults ages 14-24 with an emphasis on older youth who are not attending school. Participants set goals related to educational attainment, work readiness, skill development, and occupational skills training. Youth have opportunities to attend job fairs, earn industry recognized credentials in high-demand careers, and do college visits. Funds are available to pay for short term training programs and internship wages. Support services are available to provide transportation, work/interview clothes, and supplies as they transition into the professional world.

Future Connect (FC) serves youth ages 15-24 through a four-phase model. FC is a partnership with Connections to Independence (C2i), an organization based in South Minneapolis that provides services to young people in the Hennepin County Foster Care system.

Participants complete:

1. Work Readiness Training
2. Career Pathways Exploration (in the high-demand fields of IT or Hospitality)
3. Advanced Training (including ServSafe® Food Safety Manager or Computer Coding)
4. Paid Internships.

Throughout the program participants develop a "Pathway to My Future" plan, outlining the education and career steps necessary to reach their goals.

In addition to these two core programs, the ESNS Youth Department partnered with the City of Minneapolis STEP-UP Explore program in 2015 to provide summer jobs to 14 Minneapolis youth.



## Accomplishments/Highlights/Awards

- Future Connect, a brand new program in 2015, ran its first cohort in the fall of 2015 and had 13 youth participate.
- 32 youth participated in paid work experiences through ESNS youth programs in 2015.
- 9 youth completed Career Pathways Exploration in either the field of Hospitality or IT; 10 youth completed job training programs and earned industry-recognized credentials.



## Partnerships and Collaborations

- Asian Media Access
- City of Minneapolis/Minneapolis Employment and Training
- Code Saavy
- Connections to Independence
- Elite Catering
- ESNS Adult Employment and Training Program
- Free Geek
- Hennepin County Libraries
- IT Ready
- Menlo Park Academy
- Minneapolis Adult Basic Education
- Minneapolis Parks and Recreation
- Sammy's Avenue Eatery
- STEP-UP Explore Program
- Youth Link



# Camp Bovey

The mission of Camp Bovey is to provide a safe place for youth to have fun while participating in outdoor activities that help build respect for themselves, one another and the environment.

## Programs

We enhance an appreciation of natural resources with hands on environmental and outdoor living skills education. These sessions include: hiking, fishing, archery, tomahawk throwing, fire science, fire starting without matches, leave no trace camping, canoeing, gardening, and much more. Swimming lessons are included each day along with team building activities that heighten community pride and involvement as well as a nutrition and literacy program.

During our visual and performing arts sessions campers learned firsthand from professional artists. Igniting camper creativity and giving them the confidence to share their accomplishments with others is a highlight every year.

## Accomplishments/Highlights/Awards

- Camp Bovey's 66th summer was highlighted with another increase in attendance. We were up 46 additional campers for a total of 367!
- This past summer we introduced our gardening and nutrition programs, these are slated to grow in the coming years.
- Our local Fire Department came to camp this past summer with all of their new trucks along with the local ambulance service. Campers were able to tour each vehicle as well as try on firefighter gear.
- The Camp Bovey Olympics, an outdoor living challenge, is a highlight of our two week session. Campers were able to pull off a huge win this year in the camper vs. staff water volleyball tournament. Congratulations Campers!

## Partnerships and Collaborations

Beyond Walls, Brooklyn Center Community Schools, EMERGE, Hennepin County, Minneapolis Public Schools, Perspectives, Inc., and Washburn Center for Children.



# Menlo Park Academy

A contract alternative program of the Minneapolis Public Schools, Menlo Park Academy serves students in 9th-12th grade whose needs are not being met in the traditional school setting. Through small class sizes and a supportive staff, 75 students earn the full range of credits needed for a Minneapolis High School diploma. Menlo Park Academy creates a setting where students feel safe to learn and grow, and where educational needs are met through a wide variety of materials and strategies matched to individual learners. Learning becomes a priority when social and emotional needs are being met.

## Accomplishments/Highlights/Awards

- 16 seniors graduated.
- 5 scholarships were awarded: 2 from the Northeast Minneapolis Lions Foundation, 2 from the Kopp Family Foundation, and 1 from the East Minneapolis Exchange Club.

## Partnerships and Collaborations

East Side Youth Programs  
Minneapolis Public Schools



# Adult Employment & Training

The Employment & Training Departments aims to administer employment and training efforts based on industry specific standards and trends, while providing individual job counseling and vocational training programs. We work with employers to meet their greatest need: a skilled and trained workforce. We provide career development and training opportunities to clients of various employment backgrounds and skill sets, and help prepare them for the workforce.

Our programs include contracts with the Minnesota Family Investment Program (MFIP), Minneapolis Employment & Training (MET), and the Department of Employment & Economic Development (DEED).

## Programs

**Forklift/Bobcat® Training:** Industry recognized certification to operate sit-down and stand-up forklifts. We use industry designed curriculum developed in accordance with OSHA safety regulations.

**Health & Human Services Training:** Offering credentials in Certified Nursing Assistant (CNA) and Child Development Associate (CDA). Participants of these programs have the opportunity to concurrently complete foundation credit bearing coursework as a pathway to post-secondary education.

**Leadership in Hospitality:** Prepares individuals for entry-level management careers in hotels, quick-service restaurants, full-service restaurants, catering, and food service vendors. Participants gain credentials in Servsafe® and a certification in foundations of leadership.

**Computer Basics Workshop Series:** Aims to help bridge the digital divide through educating individuals on four beginning levels (intro, keyboarding, Internet, and email) of computer usage. The workshop series culminates with the participant being able to earn a Northstar Digital Literacy Certificate. The workshop series is offered in English and Spanish.

## Accomplishments/Highlights/Awards

- 107 participants earned an industry-recognized credential.
- 99 participants placed in employment.
- 40 participants were placed in high wage jobs \$12-\$20/hour.
- 70% of participants placed in employment retained employment 6 months after initial date of hire.
- 80% of Employment Program participants received financial literacy training.



## Partnerships and Collaborations

- Augustana Health Care
- Avail Event Services
- Department of Employment and Economic Development
- Greater Twin Cities United Way
- Hennepin County
- Herc-u-lift
- LaMere Concrete & Masonry, Inc.
- Lancer Hospitality
- Land O'Lakes
- Metropolitan Center for Independent Living
- Minneapolis Adult Education
- Minneapolis Community & Technical College
- Normandale Community College
- Quality Bike Products
- Radisson Blu Minneapolis
- Schulze Family Foundation



# Family Services

Family Services consists of the Family Violence Intervention Program (FVIP) and crisis support for families. FVIP has been offering services since the men's programming began in 1985 and the present Educational Series format was established in 1989. Current programming assists both male and female participants in developing assertive communication, non-violent behaviors, and conflict resolution skills that can be used in their home, work place, and in the community. The continuum of services assists participants to develop positive family relationships, work through life challenges, and become contributing members of the community.

## Partnerships and Collaborations

Adler Graduate School  
Alpha Human Services  
Bethel University-Social Work Program  
Beverly Foundation: Elijah's Cup Crisis Funding  
Calvary Lutheran Church  
Child Protection Offices of Wright, Hennepin, Ramsey, Scott, Anoka, Dakota, Isanti and Washington Counties  
Legal Aid Society of Minnesota  
Metro State University Social Work Program  
Minneapolis Community Technical College Human Services Program  
Minnesota Board of Social Work  
National Association of Social Workers  
NorthPoint Health & Wellness Center  
People Who Work With People Who Batter Programs  
Probation Offices of Wright, Hennepin, Ramsey, Scott, Anoka, Dakota, Isanti, and Washington Counties  
Senior Community Service Employment Project  
St. Catherine University BSW & MSW Programs  
St. Cloud State University Social Work Program  
St. Mary's Greek Orthodox Church  
Summit Academy Community Health Worker Program  
Target  
The Caring Tree/Kids In Need  
The Food Group  
Twin Cities RISE  
United Way First Call For Help 211  
University of Minnesota Moorhead School of Social Work Program  
University of St. Thomas Social Work Program





## Programs

FVIP works mainly with court ordered participants in an outcome-based 18-week educational series. Program participants are primarily men and women who have perpetrated domestic violence and have anger management issues.

Crisis Intervention Services are also provided to help meet basic needs and support their household stability. Participants receive food, household and hygiene items, clothing, bus tokens, school supplies, and gifts from the holiday toy store.

FVIP also provides crisis funding for its participants who encounter unforeseeable life events that have exhausted their resources, and it will solve an issue. Crisis funding ranges from \$50-\$500.

## Accomplishments/Highlights/Awards

- FVIP operated 50 program weeks, providing 377 meetings for men and 62 for women.
- 619 participants were served through 27,590 interventions (referrals, crisis intervention, supportive listening).
- 65 former group participants mentored a total of 220 group sessions.
- One year follow up: of the 223 group participants who completed the FVIP Educational Series in 2015, 100% did not re-offend after one year.
- 70 interns and volunteers contributed over 12,310 hours of service, equivalent to 5.9 full-time employees.
- FVIP staff trained interns from 11 different colleges and universities for 11 different degrees.
- 308 individuals received Crisis Intervention Services which provide basic need goods such as food, household and hygiene items, bus tokens, and school supplies.
- The Holiday Toy Store program served 108 households with gifts for 342 children.
- Group sizes peaked at 35, so orientation sizes were capped to make group sizes and participant caseloads more manageable (20-22). A waiting list for orientation has been established. Text message reminders are being sent to participants to remind them to attend orientation which also has reduced the number of participants who register and do not attend orientation.
- Hennepin County renewed the contract for another 3 years.



# Empowering Vital Aging

The ESNS Empowering Vital Aging programs promote access to community-based services for older adults to Live Well at Home. Our programs are designed to nurture healthy aging and inspire older adults to remain active and engaged. Beyond our basic needs, the needs of health, mobility, and social connections continue as we age. The ESNS Program, Empowering Vital Aging or “EVA” reflects our community-based senior programs that are designed to assist all of us to stay connected and engaged in the community, to gain access to resources and supports needed to nurture healthy aging, and to extend our quality of life in the community.

## Programs

A collection of experiences that support “Empowering Vital Aging” include:

- Speakers, educational sessions, and classes
- Elder Law Clinics
- AARP Tax Assistance
- Volunteer experiences
- Annual events: Senior Appreciation Valentine Luncheon; Health & Wellness Expo - Aging is for Everyone
- Core program services: Senior Community Service Employment Program (SCSEP), Accessible Transportation, Adult Day at Friendship Center, High Rise Mobile Food Shelf Program, Senior Food Shelf, and VOA Senior Dining hosted at East Side Neighborhood Services.

## Partnerships and Collaborations

- AARP Tax Assistance
- AmeriPride
- Bio-Techne
- East Minneapolis Exchange Club
- Empowering Vital Aging was supported in part, by a Live Well at Home grant from the Minnesota Department of Human Services.
- Foster & Brever, PLLC
- Medica Foundation
- Metropolitan Area Agency on Aging
- PREPARE+PROSPER
- Target NE
- Union Bank & Trust
- University of Minnesota, Clinical Translational Science Institute, KL2 Scholars Program
- Washburn-McReavy



## Accomplishments/Highlights/Awards

Programming began to connect those intent on Living Well at Home with evidence-based wellness classes, community engagement, peer interaction/ social opportunities, caregiver support, information, and advocacy to help channel essential services to at-risk older adults and their families.

- A Matter of Balance: Fall Prevention Education Program
- Living Well with Chronic Conditions
- Tai Ji Quan - Moving for Better Balance

Over 4,300 unduplicated older adults 55- 85 years and better accessed ESNS' Empowering Vital Aging Services.

ESNS hosted a "Watch Party" –live streaming the 2015 White House Conference on Aging- creating an active listening and discussion opportunity for the room full of attendees.

Annual Senior Appreciation Valentine Luncheon- 300 participants served.

Annual Health & Wellness Expo - Aging is for Everyone delivered engaging experiences spotlighting healthy options to Be Well to over 150 participants.

VOA Senior Dining site hosted by ESNS served 12,747 hot week day lunches.

2014/2015 Ready Steady Pilot served 52 older adults (mean age was 78 years) demonstrated increased skills to monitor their physical activity and goal outcomes using a Fitbit; increasing strength & balance leading to easier movement.

AARP Tax Program completed 427 Federal and State returns, and 317 Rent/ Property tax rebate returns.

639 families were assisted filing 1,431 returns (Federal & State) which generated refunds of \$1.3 million dollars through tax preparation support provided by PREPARE+PROSPER.

Elder Law Clinics were held one Saturday each month, April - October with every session filled.



# Senior Transportation

Wheelchair Accessible Senior Transportation Services is to provide special transportation services to area seniors to support aging in place. ESNS' Senior Transportations' lift-equipped vehicles enabled older adults to access medical appointments, shopping, senior dining, social events, cultural events, and volunteer commitments on a weekday schedule. Providing older adults with mobility support helps them remain active, make connections, and attend community events like the Senior Health & Wellness Expo and the Senior Appreciation Valentine Luncheon. ESNS Senior Transportation also manages East Side's four 15 passenger Club vans supporting our Youth and Employment programs.

## Accomplishments/Highlights/Awards

We had an accident free year, serving 427 clients by delivering 23,658 one-way rides. We upgraded our senior minivan with help from Xcel Energy and Sterling Housing Corp. With support from area service clubs Northeast Minneapolis Kiwanis Club, Lions Club of Northeast Minneapolis, and East Minneapolis Exchange Club we purchased a 2015 club van. Our application for a new lift-equipped vehicle has been granted with delivery in January 2016.

## Partnerships and Collaborations

- Catholic Elder Care
- East Minneapolis Exchange Club
- Hennepin County
- Lions Club of Northeast Minneapolis
- Metropolitan Area Agency on Aging
- Minneapolis Public Housing Authority
- Minnesota Department of Transportation
- Northeast Minneapolis Kiwanis Club
- St. Anthony Health Care
- The Kensington
- TRS Property Management
- YMCA at Heritage Park



# Senior Community Service Employment Program

Senior Community Service Employment Program (SCSEP) provides job training to low-income older adults 55 years of age and older (residing in Hennepin County) through subsidized wage positions in local public and non-profit organizations delivering a wide range of service to children, youth, and adults. Employment through SCSEP provides personal skill development while providing paid on-the-job training at community based nonprofits allowing older adults to hone their skills while earning a wage as they search for unsubsidized employment.

## Accomplishments/Highlights/Awards

- 222 qualified older adults served.
- 38% over the age of 65; 6% over the age of 75, 72% minority.
- 35 moved on to unsubsidized employment.
- 81 community-based non-profits throughout Hennepin County served as host sites.
- SCSEP hosted a listening session for the community on the Sixth White House Conference on Aging on July 13, 2015.

## Partnerships and Collaborations

- Department of Rehabilitation
- Emerge
- ESNS Adult Employment
- Hennepin County Workforce Centers
- HIRED
- HSPHD Works Eligibility Worker Group
- Ignatian Volunteer Corps
- Opportunity Partners
- Personal Transportation, Inc. (PTI)
- Senior Service America Inc., Title V Older Americans Act
- Workforce Benchmarking Network



# Metro Food Programs

Each of our three food shelf programs assist people who because of age, disability or language may face barriers accessing other food programs. We work in partnership with Minneapolis Public Housing Authority (MPHA) and other subsidized housing agencies who host our food shelves in their buildings. Each food shelf uses the “choice” model and provides a 4-6 day supply of food every month for each person in the household. Households are eligible if their income is under 200% of the poverty line. We focus on providing fresh fruits and vegetables, dairy, meat, other staple items, and culturally specific food items. We also provide information and referrals to food programs like SNAP, other ESNS programs, and community resources.

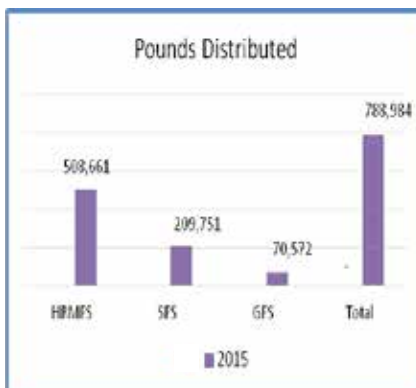
## Programs

**The Senior Food Shelf (SFS)** serves adults 55 and older residing in Hennepin County. In 2015 The Senior Food Shelf’s services grew by 27%!

**The High Rise Mobile Food Shelf (HRMFS)** delivers a food shelf twice a month to 37 subsidized high rise buildings with residents who are 55+ and/or disabled. Over 200 residents volunteer to set up the food shelf and organize each distribution under the guidance of ESNS staff.

**Glendale Food Shelf (GFS)** provides supplemental and culturally specific food assistance to residents of Glendale Town Homes in SE Minneapolis. Glendale is a diverse community of families with the majority being immigrants from East Africa and Southeast Asia.

## Accomplishments/Highlights/Awards



## Partnerships and Collaborations

**Food Donors/Suppliers:** Bix Produce, Caribou Coffee – Washington Ave SE, Cub Foods – the Quarry, Eastside Food Co-op, Growing Hope Farm, Liberty Distribution, Sam’s Club – Fridley, Second Harvest Heartland, Target – the Quarry, Target Express – Dinkytown, The Food Group, The Lone Grazer Creamery, Whole Foods - Calhoun, Whole Foods – Edina.

**Collaborations:** AHEPA Housing, Avinity, BDC Management, Bigos Properties, CommonBond Communities, Ebenezer, Ecumen, Minneapolis Public Housing Authority, St. Olaf, Shalom, Volunteers of America.

**High Rise Partners:** 1900 3rd Street NE, Arbor Lakes Commons, The Atrium, Basset Creek Commons, The Cooperage, Crest Apartments, Dickman Park Apartments, Ebenezer Park Apartments, Ebenezer Tower Apartments, Edendale Residence, Hamilton Manor, Holland Highrise, Holmes Greenway, Holmes Park Village, Labor Retreat Apartments, Lilac Parkway Apartments, Loring Tower, Lowry Towers, Menorah Plaza, Monroe Village, North Oaks / St Olaf, Park Elder Center, Penelope 35 I, Penelope 35 II, Richfield Towers, The Riverside, Robbins Landing, Robbins Way, Seward Tower East, Seward Tower West, Shingle Creek Commons, Sibley Triangle, South Haven, Spring Manor, St. Anne’s Apartments, Trinity Apartments, Winnetka West, Yorktown Continental.



# Adult Day at Friendship Center

Adult Day at Friendship Center is a community-based program meeting the health, social, recreational, and therapeutic needs of older adults. Adult day services provide much needed respite and peace of mind for family caregivers, empowering all so loved ones can Live Well at Home.

## Program

Since 1976 Friendship Center has offered creative, fun programs engaging the mind, body, and spirit of older adults in a caring, compassionate community. Clients, family members, and caregivers know they or their loved ones are safe with professional staff who focus on each client's interests and goals.

## Partnerships and Collaborations

- Bethel University
- Breck School
- Courage Kenny
- ESNS After School Pen Pals
- ESNS Transportation
- Green Jeans Media
- Group Work Camp-Week of Hope
- Home Instead
- Ignation Volunteer Corps
- Leading Age
- Menlo Park Academy
- Metro-Mobility
- Metropolitan Area Agency on Aging
- Minneapolis Pops Orchestra
- Minneapolis Transitional Elementary School
- Minnehaha Academy
- Minnesota Adult Day Services Association
- Minnesota Department of Human Services
- Mulberry Junction
- Northeast Child Development Center
- St. Catherine University
- University of Minnesota Extension
- University of St. Thomas



## Accomplishments/Highlights/Awards

- 11 intergenerational groups
- 40 outings/community events
- 10 in house community events
- Art, crafts, and decorations for East Side buses and buildings
- Professional staff follow DHS Quality Improvement Plan
- New and continued friendships
- Minnesota Adult Day Services Association presented Meagan Kavanaugh with the 2015 Volunteer Award for her 26 years of services to Friendship Center.
- Friendship Center presented awards to each client for their length of participation from being the new kid on the block up to 20 years!



# Events and Volunteers

## Centennial Celebrations!

In our 100th Year of Service we were able to reconnect with old friends and introduce ourselves to new ones. Fundraising events provide opportunities for East Side Neighborhood Services to make connections with members of the community, and serve as a key source of support for our programs. We are proud of the connections and commitments of our friends and neighbors who actively participate in our fundraising events throughout the year. We are thankful for the participants who have supported us during our 100th year. Donors contributed more than \$235,000 for upgrades of our building, programs, and services.

We held a **Community Open House** while our building was open during Art-a-Whirl® on Saturday, May 16, 2015 complete with birthday cake for all. Twenty-two Minnesota artists displayed their artwork throughout our community space. Family creative art activities were held outdoors.

At the East Side Neighborhood Services **Centennial Gala** on September 24, 2015, 338 East Side friends and guests filled the Nicollet Island Pavilion to celebrate our agency's 100th Anniversary. The Centennial Gala evening began with a reception in the Pavilion's tent where guests enjoyed appetizers that are particular favorites in Northeast Minneapolis. Our newly created historical timeline was displayed. Entertainment was provided by Kalpulli KetzalCoat-licue Aztec Dancers. The evening's program featured remarks and memories from Caroline Scheaffer Arnold, Diane Hofstede, Rich Stanek, Walt Dziedzic, many other friends, and a champagne toast led by our Board Chair, Steve Dunphy.



## Annual Events

**Twin Cities Snowshoe Shuffle and Canines for Camp Dog Walk** were held on February 7, 2015 at Long Lake Regional Park. More than 200 participants were registered for the race and walk. After the race, participants, their loved ones, and volunteers enjoyed a chili lunch, awards and silent auction at our agency. The Battle of the Brewers was added as an addition to the race, encouraging local breweries to enter teams and win a traveling trophy.



**Senior Valentine Luncheon** was held February 12, 2015. 300 seniors attended the event. 58 volunteers assisted, including groups from Northeast Bank, Union Bank & Trust, Washburn-McReavy, and Menlo Park Academy.

**19th Annual East Side Wine Tasting** was held on May 14, 2015 at Nicollet Island Pavilion. There were approximately 500 attendees and 52 Volunteers.



**Northeast Big River Brew Fest** was held on October 17, 2015 at East Side. 1025 attendees tasted beer from 40 vendors and enjoyed food from Red Table Meats, The Lone Grazer Creamery, local brats and Lloyds BBQ. 34 volunteers assisted.

The **Mill City Charity Golf Tournament** was held on July 23, 2015 at Columbia Golf Course. A patio party was held at Sarna's Classic Grill after the tournament. 96 Golfers and 8 volunteers assisted.



The **Holiday Train** was held, December 10, 2015 at the Shoreham Rail Yard in Minneapolis. More than 2000 community members attended to support East Side food shelves! 62 volunteers helped to collect over 4,000 pounds of food, doubling the amount of food previously recorded from this event. Canadian Pacific Railway presented a check for \$15,000 for our food programs.

**Adopt a Family:** 130 households including 426 children, received holiday gifts and certificates from 11 donor groups and individuals.



# Events and Volunteers

## Partnerships & Collaborations

Partnerships & Collaborations  
2 Gingers Whiskey  
Aramark  
Arcana Lodge #187  
Art District Chiropractic  
Bio-Techne  
Breck School  
Church of St. Charles Borromeo  
Circle of Light Ministries  
Dangerous Man Brewing Company  
DeLaSalle High School  
East Minneapolis Exchange Club  
Fair State Brewing Cooperative  
Faith United Methodist Church  
Federal Reserve Bank of Minneapolis  
FedEx  
Finnegans  
FirstTech Inc.  
Foley & Mansfield, PLLP  
Foster & Brever, PLLC  
Grace United Methodist Church  
Graco, Inc.  
Gustavus Adolphus Lutheran Church  
Harmon, Inc.  
Hennepin County  
Holy Cross Catholic Church  
Honeywell NE Minneapolis  
Kozlak Radulovich Funeral Chapels  
Land O'Lakes  
Lions Club of Northeast Minneapolis  
McKinley Group  
Medica  
Medtronic, Inc.  
Meritex  
Metropolitan Health Plan  
Minneapolis City of Lakes Rotary Club  
Minnehaha Academy  
Mount Carmel Lutheran Church  
New Brighton/Mounds View  
Rotary Club  
Northeast Bank  
Northeast Minneapolis Kiwanis Club  
Northeast Minneapolis  
Chamber of Commerce  
Northeast Minneapolis Royalty  
Northeast United Methodist Church  
Optum  
OPUS Foundation  
Parsons Corp  
Prairie Fire Lady Choir  
R&D Systems, Inc.  
River Liquor Store  
RSP Architects  
Russell Reynolds Associates  
Scales Advertising  
Sentyrz Market  
St. Mary's Men's Club  
St. Paul's Lutheran Church  
Stanley's Northeast Bar Room  
Surdyk's Liquor & Cheese Shop  
The Church of St. Gerard  
Trinity United Methodist Church  
TruStone Financial  
UCare  
Union Bank & Trust  
UnitedHealth Group  
University of Minnesota Twin Cities  
University of Minnesota Twin  
Cities Athletics  
UPS  
US Foods  
Waite Park Church  
Washburn-McReavy  
Wells Fargo Audit Services  
Xcel Energy  
Xcel Energy Women in Nuclear



## Volunteers

Volunteers breathe life into our fundraising events and programs. With our large array of programs and events, we are able to find a job for anyone who wants to volunteer. Whether it is rocking babies in daycare, cooking food for our events, or repairing buildings at Camp Bovey, we have a place for their skills. We are grateful for the individuals, business groups and organizations who devoted their time in 2015 to help us continue to support the Northeast Minneapolis community.

### Highlights

30 Volunteers from Land O'Lakes helped us to prepare our building and grounds for our centennial activities and ended the day being joined by our daycare children for an ice cream social.

Fair State Brewing Cooperative, Indeed Brewing Company, and NorthGate Brewing conducted fundraising events at their pubs that benefitted our programs.

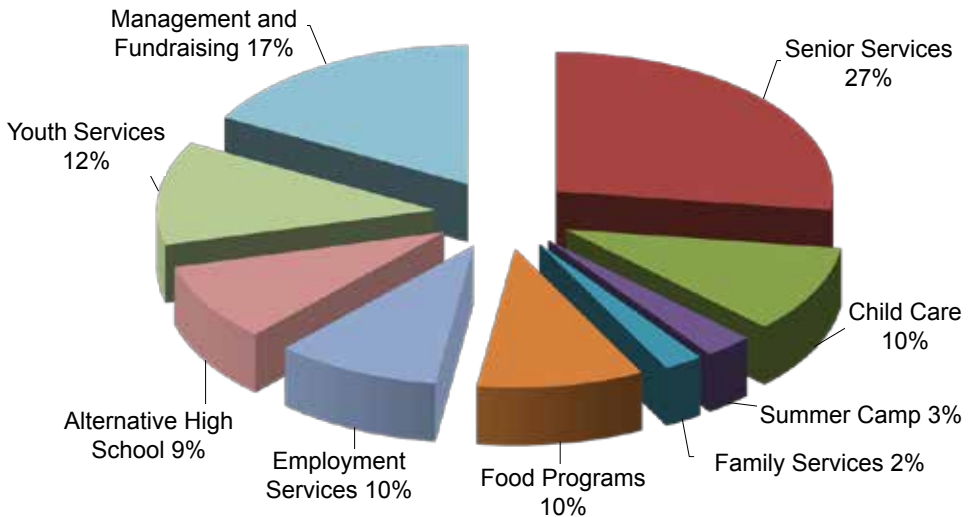
High school student volunteer groups from Breck School and Minnehaha Academy worked with both youth and senior programs.

To ensure the success of our agency, 774 volunteers devoted 29,408.25 hours of time to the programs and events of East Side. The Volunteer Program additionally worked with Hennepin County, Anoka County, Ramsey County, HIRED, Twin Cities RISE, Tree Trust, Minneapolis Public Housing, and local high schools to place individuals that are in need of serving community service hours.



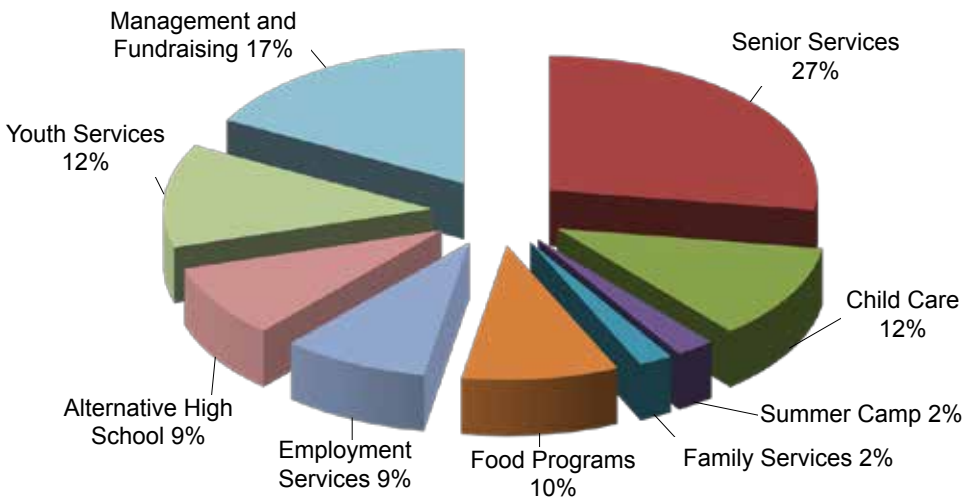
# Financials and Demographics

## 2015 Program Expenses



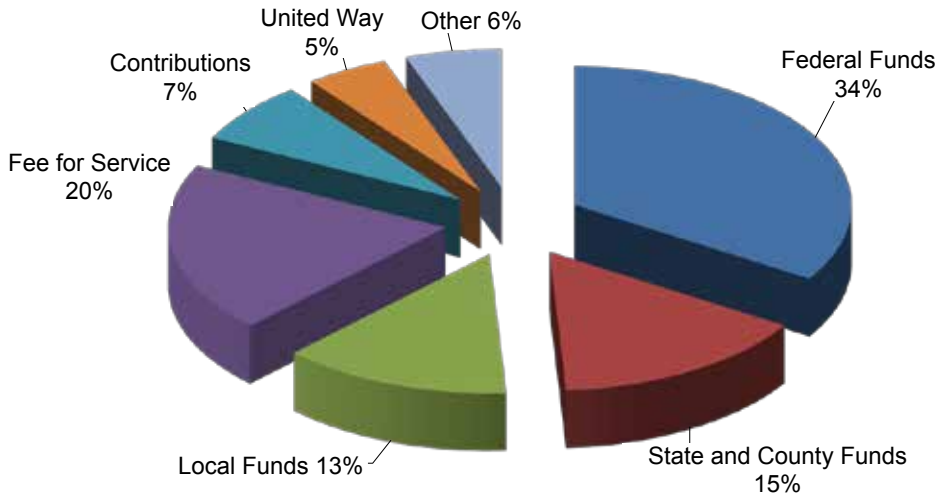
**Total 2015 Program Expenses: \$6,672,857**

## 2016 Program Expenses



**Total 2016 Program Expenses: \$7,259,574**

## 2015 Revenue Sources



**Total 2015 Revenue: \$6,778,888**



## Demographics

**Total unduplicated served in 2015: 8,494**

### Gender

Female: 53%  
 Male: 45%  
 Not Disclosed: 2%

### Poverty Level

<100% Poverty: 34%  
 100% - 200% Poverty: 47%  
 >200% Poverty: 4%  
 Not Disclosed: 15%

### Ethnicity/Race

African: 10%  
 American Indian: 2%  
 Asian: 3%  
 Black/African American: 24%  
 Caucasian: 28%  
 Hispanic/Latino: 3%  
 Multiracial: 5%  
 Not Disclosed: 24%  
 Other: 1%

### Age

0-5: 2%  
 6-9: 4%  
 10-14: 6%  
 15-17: 4%  
 18-22: 5%  
 23-54: 25%  
 55-64: 26%  
 65-74: 16%  
 75-84: 8%  
 85+: 4%



# Board of Directors and Committees

## Board Officers

Steve Dunphy  
Board Chair

Curt Holewa  
Ex Officio

Harvey Johnson  
Vice Chair

John D. Thompson  
Human Resources Chair

Judy K. Larson  
Secretary

William J. Laden, LISW  
President

Michael Giefer  
Treasurer

## Board of Directors

Michael J. Burns  
Washburn McReavy  
Funeral Chapels

Harvey Johnson  
Land O'Lakes

Donette Rico  
KNOCK Inc.

Terry M. Butorac  
Carlson Companies

Judy K. Larson  
Hennepin County

Gloria Sheehan  
Graco, Inc.

Dan A. Christian  
Retired/Regis Corporation

Andrew Martin  
Northeast Bank

Dennis J. Spalla  
Retired/  
United Health Group

Steve Dunphy  
Retired/Land O' Lakes

Michelle Mercer  
Retired

John D. Thompson  
Oberman Thompson, LLC

Dr. Hamdy El-Sawaf  
Family Counseling Center

Michael R. Miller  
Consultant

Kathy Waite  
Minneapolis Police  
Department

Robert J. Foster  
Foster & Brever, PLLC

Robert J. Miller  
Retired/ R.J. Plumbing &  
Heating

Tina Wallman  
Optum

Michael Giefer  
Union Bank & Trust

Nikki Neubauer  
Graco, Inc.

Douglas Helm  
MinMor Industries, LLC.

Susan O'Reilly  
O'Reilly Creative, LLC

Curt Holewa  
US Foods

Robert Rand  
Minneapolis Public Schools



## Board Committees

### Executive

Michael Giefer\*  
 Steve Dunphy\*  
 Curt Holewa\*  
 Harvey Johnson\*  
 Judy Larson\*  
 John Thompson\*  
 Bill Laden  
 Tom Miller

### Budget/Finance

Michael Giefer\*  
 Bill Laden  
 Judy Larson\*  
 Susan McCauley  
 Nikki Neibauer\*  
 Tom Miller  
 Jeff Munding  
 Greg Ritter  
 Scott Ryberg

### Development/ Visibility and Alumni

Mary Ostapenko  
 Anstett  
 Robert Foster\*  
 Michael Giefer\*  
 Doug Helm\*  
 Bill Laden  
 Judy Larson\*  
 Michelle Mercer\*  
 Susan O'Reilly\*  
 Greg Ritter  
 Gloria Sheehan\*

### Camp Bovey

Michael Burns\*  
 Steve Dunphy\*  
 Curt Holewa\*  
 Tony Lipa  
 Robert Miller\*  
 Caryn Olsen  
 Rob Rand\*  
 Kathy Koslosky  
 Tom Miller  
 Bill Laden

### Technology

Dan Christian\*  
 Richard Gray  
 Mitch Jones  
 Bill Laden  
 Andrew Martin\*  
 Susan McCauley  
 Tom Miller  
 Jeff Munding  
 Scott Ryberg

### Human Resources

Terry Butorac\*  
 Curt Holewa\*  
 Michelle  
 Kornowski  
 Bill Laden  
 Michael Miller\*  
 Dennis Spalla\*  
 Jeff Munding  
 John Thompson\*  
 Kathy Waite\*  
 Tom Miller

### Facilities

Jim Felicetta  
 Mike Kuduk  
 Bill Laden  
 Robert Miller\*  
 Steve Smith  
 Jeff Munding  
 Scott Ryberg  
 Jennifer Young

### Food Programs

Bill Laden  
 Judy Larson\*  
 Steve Dunphy\*  
 Harvey Johnson\*  
 Michelle Mercer\*  
 Donette Rico\*  
 Rob Haarsager  
 Susan McCauley  
 Tom Pingatore  
 Phil Qualy  
 Walt Sentyrz  
 Jeff Munding

### Events

Mary Ostapenko  
 Anstett  
 Michael Burns\*  
 Robert Foster\*  
 Michael Giefer\*  
 Bill Laden  
 Judy Larson\*  
 Michelle Mercer\*  
 Susan O'Reilly\*  
 Donette Rico\*  
 Gloria Sheehan\*  
 Harvey Johnson\*  
 Greg Ritter

### Education

Hamdy El-Sawaf\*  
 Linda Foster  
 Mark Harelstad  
 Brittany Howell  
 Robert Rand\*  
 Bill Laden  
 Helen Henly  
 Margie Bragg  
 Tom Miller  
 Caryn Olsen

### Employment

Terry Butorac\*  
 Doug Helm\*  
 Judy Larson\*  
 Bob Smithberg  
 Tom Miller  
 Caryn Olsen  
 La Tasha Shevlin  
 Macey Wheeler

### Early Childhood Education

Margie Bragg  
 Michael Burns\*  
 Steve Dunphy\*  
 Robert Foster\*  
 Bill Laden  
 Kris O'Dell  
 Jeff Munding  
 Tom Miller

### NE NELC

Bill Laden  
 Andrew Martin\*  
 Susan McCauley

### Nominating

Mary Ostapenko  
 Anstett  
 Hamdy El-Sawaf\*  
 Judy Larson\*  
 Michelle Mercer\*  
 Michael Miller\*  
 Susan O'Reilly\*  
 Bill Laden

### Legal Issues

Robert Foster\*  
 Bill Laden  
 John Thompson\*

### 2015 Centennial Committee

Sue Sjoselius,  
 Mary Ostapenko  
 Anstett  
 Margo Ashmore  
 Jim Davis  
 Robert Foster\*  
 Michael Giefer\*  
 Doug Helm\*  
 Diane Hofstede  
 Martha Krueger  
 Bill Laden  
 Danielle  
 Radulovich  
 Nelson  
 Renee Purrier-  
 Hieb  
 Greg Ritter  
 Gloria Sheehan\*  
 Mary Ann Silk  
 Heidi Zaworski

*\*Denotes Board of  
 Directors Member*



# Individual Donors

Anonymous  
Susan Abbott  
Susan L. Allen  
Carol S. Allin  
Kate and Jon Anderson  
Bill and Mary Anstett  
Janet Arai  
Caroline Scheaffer Arnold  
Jennifer Arnold  
Valencia Arturo  
Margo Ashmore  
Anitha Asokan  
Teresa A. Atkinson-Sikora  
Eric Baeverstad  
Milly Baeverstad  
Jane Baird  
Carol Jo Bargsten  
Stephanie Bass  
J. Baumgartner  
Brittany Baurle  
Loretta Bebeau  
Jeremy Beck  
Jerry M. Beckman  
Susie Q. Belford  
John and Pat Belian  
Susan K. Bembenek  
Cheryl Bengston  
Kate and Pete Bennet  
Suzanne C. Bergeron  
Roger Berglund  
Joe and Sheila Biernat  
Joseph and Darlene Bishop  
Luke Bourassa  
John F. Brandes  
Judy Bratt  
D. Kevin Briggs  
Steve Brinda  
Donna Brophey  
Christine Brown  
Jim Bucsko  
Pat Bumgarner  
Mary Lou Burdick  
Kim Burgess  
Terry Butorac  
Mary Bydlon  
Mark Byrnes  
Diane Calistro  
Renee Canales  
George and Judy Carlson  
D'Ete Carpentier  
Barbara Cegielski  
Betty Claussen  
Harold Coleman  
Sharon Cormany  
John Cosgrove  
Greg Coyan  
Laura Crocker  
Derek Crosier  
John Cushing  
Sherry L. Cyza  
Marilyn Davis in memory of  
James (Ozzie) Osborn  
Holly Day  
Lynne and Hans Dekker  
Lou DeMars  
Paul DesMarais  
Jane Dickerson  
Tuleet DinKeyto  
John and Julie Ditzler  
Joe Dowling  
Bridget M. Doyle  
Carole N. Drake  
Rhonda and Gerald Duncan  
Steve and Luann Dunphy  
Mary Dymanyk  
Kari Dziedzic  
Walt and Pat Dziedzic  
Mickey and Carrie Eder  
Mary and Richard Eide, Sr.  
Liz and John Ellenberger  
Chris Ellis and Tina Hinrichs  
Sharon Ellis  
Hamdy El-Sawaf  
Jamieson and Meredith  
Elston-Jones  
Jean Emmons  
Larry and Jane Eshleman  
John Feigal  
Terri Fellego in memory of  
Tom Fellego  
Jay P. Fetyko  
Amy Fields  
Michola Foley  
Bob and Linda Foster  
Katie and Rick Fournier  
Ruth Fox  
Janice Frakie  
Kristi Frank  
Don and Arvonne Fraser  
Bill Fredrick  
Michael F. Fresonke  
Barbara & Lanning Gabatino  
Lester and Marianne Gable  
Joseph Gallick  
Jean Garbarini  
Oleksandra and George  
Gelecinsky  
Lori and Nick Geller  
Cathy Gendreau  
Michael Giefer  
Thomas Glodek  
Mary Gordhmer  
Jennifer Gorka  
Vicki Grant and Pat Grengs  
Beth and Patrick Greffin  
Karen Grinsteinner  
Kathleen M. Groh  
Dorothy Groom  
Stephan Grygar  
Bob and Rosie Gubrud  
Dennis Haarsager  
Rob Haarsager  
Katharine S. Handley  
Gail, Del and Evelyn Hansen  
Bev Hanson  
Carmel M. Harlan  
Jan M. Harrison  
Megan Hartman  
Robert W. Hatch  
Doug Helm  
Jacquelyn Henning  
Alicia Hernandez  
Linda and Dale Herron  
Randy Hertog  
Ray E. Hess  
Richard Higgins  
Ruby Hocker  
Sharon Hodgkins  
Walter Hodynsky  
Marilyn Ann Hoffman  
Diane and Tony Hofstede  
Andrew Holewa  
Curt and Mary Holewa  
Kristine Holewa  
Storey L. Holland  
Mary Hollie  
Osie Mae Hollie



Linda Holstein  
Judy Horns  
Wayne Houle  
Jerrold Hromatka  
Sandra Hunter  
Charles Huntley  
Shamsa Ibrahim  
Thomas H. Igel  
David and Linda Indrehus  
R.W. Jackson  
Ralph and Carrie Jacobson  
Ann Jaede  
William and Karen Jansen  
LaDonna M. Jensen  
Darren Johnson  
Harvey and Gwen Johnson  
James and Marilyn Lou  
Johnson  
Mark R. Johnson  
Doug and Linda Jones  
Pam and Paul Jordan  
BJ Jorgenson  
Helen Josul in memory of  
Nick Josul  
Kathy Jurichko  
Corrine Kaiser  
Patricia Kaluza  
Helen Kapeluck  
Pamela K. Kaufmen  
Donna Kavanaugh  
Kathryn E. Keefer  
William Kelly  
John and Shary Kempainen  
Jim Kielsmeier  
Lydia T. Kihm  
Adrienne Kinkaid  
Barry and Judith Kirchmeier  
Kathryn Anne Kline  
Karen M. Kohl  
Tom and Karen Korba  
Mary Korsmo  
John Kostishack  
Marc Kowalski  
Bill and Kathy Kozlak  
Bob and Pat Kramer  
Mark Kraemer and Kathleen  
Macaulay-Kraemer  
June Kroening  
David E. Kullman

Frankie Kurvers  
Mark and Wendy Kuzma  
Bill and Laurie Laden  
Steve and Linda Laden  
Byron and Joyce Laher  
Mary J. Laker  
Bruce LaMere  
Donald LaMere  
Karen LaMotte  
Diane Davis Langer  
Jennifer L. Larson  
Judy Kay Larson  
Kim Larson  
Mary Larson  
Evelyn LaRue  
Rosella Lazorick  
D.J. Leary  
Tamara Legler  
Bonnie Leslie  
Richard Levins  
Charles Lewis  
Alison Lienau  
Carol and James Lind  
Anne Lindstrom  
Tony Lipa  
Catherine Liska  
Diane Loeffler  
Mary Marrin Loetscher  
Diane Lucas  
Susan Luke  
Dianne Lutz  
Mark O. Lynch  
Elizabeth K. Maguire  
Scott Mahmann  
Robert Margl  
Louis and Marie Marino  
Andrew Martin  
Lara Martinson  
Theresa Mauers  
Susan and Dale McCauley  
Ron and Nancy McCoy  
Mary McDowall  
Darlene McDuffy  
Peter and Elaine McGillivray  
Joe and Julie McGraw  
Karen L. McKernan  
Meghann McLouth  
Jim McMerty  
Rosemary McMonigal

Chris Meehan in memory of  
Tim Meehan  
Mark and Sara Mekler  
John A. Memorich  
Michelle Mercer  
Robin Mercier  
Lucille B. Miller  
Robert J. Miller  
Tom Miller  
Adam and Lisa Moore  
Karen Moorman  
Scott Alan Mork  
Bernard W. Mulvihill  
James Murzyn  
Paula Reed Nancarrow  
Heladore Nawara  
Richard and Joan Naymark  
Donna J. Nelson  
Kristi Nerby  
Nikki Neubauer  
Raymond M. Newman, Jr.  
Irene and Jack Novak  
Lawrence Nowak  
James G. Nyberg  
Patricia L. O'Brien  
Deloris A. O'Brien  
Ruth Hampton Olkon  
James and Lee Olsen  
Janet Orescanin  
Dolores Orr  
Eileen M. Ostrem  
Michael Ostrem  
Jim Ousley  
J. Paquette  
Marlene Parkhurst  
Kevin Patty  
Richard and Gretchen Peik  
Lorann Pederson  
Kate Perry  
Sonja D. Peterson  
Kotowska Picon  
Victor Pollard  
Mary Pooch  
Nick and Judy Priadka  
Connie Pries  
Dawn M. Pruiett  
Jere Anne Purple  
The Purrier-Hieb Family  
Susan Quakkelaar

# Individual Donors

A. Quinn  
George Rabasa  
Danielle Radulovich  
Rebekah Richards  
Renee Richie  
Donette P. Rico  
Jonathan Riehle  
Pat and Kathy Riley  
Greg and Barb Ritter  
Malcolm and Jane Ritter  
Paul Roberts  
Sally Rubenstein  
Michael and Susan Russinik  
Catherine M. Schack  
Barry T. Schaub  
Jeffrey M. Schrempp  
Melita Sconiers  
Annette Schiebout  
Marty and Carol Schirber  
Janet Scott  
Gloria D. Sheehan  
Angela Sherer  
Helen and Tom Skovran  
Jim and Tina Shaw  
Rebecca Shockley  
Andrew M. Simons  
Jim Simonson  
Kelly Sinkbeil  
Richard and Natalie Sitarz  
Keith and Nancy Sjoquist  
Sue and Jim Sjoselius  
Christine Slater  
Judith A. Smith  
Stephany Smith  
R. Smithburg  
Billy Smoka  
Dennis and Deirdre Spalla  
Stanley J. Sroga  
Jane A. Starr  
Ellen J. Stein  
Jerry and Margy Stein  
Kunie Stenzel  
Dr. Edward L. Stern  
Paula Sterner  
Rebecca Strauchon  
Lorraine Stromme  
Jan Stroup  
Harvey B. Sunt  
Kimberly Kay  
Swanson-Burgess  
Aaron Thompson  
John Thompson and  
Ann Viviano  
Tracy Thoraldson  
Donna Tilsner  
Lauren Tjernlund  
Cathleen Trach  
Louis A. Tschudy  
Linnea Tweed  
Margaret A. Ungerman  
Kathy Waite  
Todd and Polly Walker  
Tina Wallman  
Pearl G. Walrath  
Catherine and Willis Warren  
Jonathan Weiss  
Rachel Weitz  
Abe Welle  
Marlene Weller  
Seth Werner  
Gail Wescott  
Elizabeth M. Wielinski  
Elisabeth M. Will  
Lois Willand  
Larry Williams  
Trent and Pam Williams  
Ann Wilson  
Linda Wilson  
Ralph W. Winkelmeyer  
Janice Holm Wryk  
Jennifer Young  
Kenneth R. Young  
Kathleen Zacher-Pate  
Donald H. Zahorski

# Corporate & Foundation Donors

11 Wells Spirits  
Adler Graduate School  
Alamo Transportation  
ATU Local 1005  
Barna, Guzy & Steffen, Ltd.  
Beisswenger's Hardware  
The Beverly Foundation  
Bibelot Shops  
Big Lots Stores, Inc.  
Bix Produce Co.  
Brave New Workshop Comedy Theatre  
Bryant Lake Bowl  
Canadian Pacific Railway  
Cargill Global Partnership  
Caribou Coffee  
Curtis L. Carlson Family Foundation  
Catholic Eldercare  
Charity Incorporated  
Ron and Kathy Colby Family Foundation  
Columbia Heights Rental  
ComedySportz Twin Cities  
Corporate Realty Advisors  
CorVel Corporation  
Crafty Planet  
Cub Foods  
Curves®  
Dave's Sport Shop  
Digi International  
D-Rock Center  
Eide Saw & Tool Services, Inc.  
Elsie's Restaurant, Bar and Bowling Center  
Eureka Recycling  
Express Scripts Foundation  
Fair State Brewing Cooperative  
Foley & Mansfield Charitable Foundation  
Foster & Brever, PLLC  
Fourth Generation Fund, The Minneapolis Foundation  
Fulton Brewery  
GAF  
GASTROTRUCK  
General Mills  
Girasole Yoga  
Glodek Group  
The Graco Foundation  
Grand Casino  
Growing Hope Farm  
Haskell's  
Home Depot  
Hormel Foods Corporation  
Hubbard Broadcasting Foundation  
Jackson Street Roundhouse – MTM  
Jimmy's Bar and Lounge  
Juice So Good  
K & B Transportation  
Kensington Place  
Kopp Family Foundation  
Kozlak-Radulovich Funeral Chapel  
KTS Transportation  
LaMere Concrete & Masonry, Inc.  
Land O' Lakes Foundation  
LivingSocial  
Lloyd's Barbeque Company  
The Lone Grazer Creamery  
Marino's Deli  
The McKnight Foundation  
Mello Smello  
Midwest Supplies Homebrewing & Winemaking  
MinMor Industries, LLC.  
Minneapolis Foundation Youth Philanthropy Fund  
Minnesota Jewish Theatre Company  
Minnesota Lynx  
Minnesota Sea Life Aquarium  
Minnesota Timberwolves  
Minnesota Twins  
Minnesota Vikings  
Mintahoe Catering & Events  
Mother Earth Gardens  
Mutual of America  
MVR Adult Day Services, Inc.  
New Brighton Parks and Recreation  
Northeast Yoga  
Northeast Bank  
Northeast Tree, Inc.  
Opus Foundation  
Otogawa-Anschel Design+Build  
Otto Bremer Trust  
Patch Foundation  
Pipefitters Local 539  
Press Sure Print  
Rasmussen – Northeast Bank Foundation  
RBC Wealth Management  
Recycle Technologies, Inc.  
Red Balloon Bookshop  
Redfeather Snowshoes  
Red Table Meat Company  
Red Wagon Creations  
RSP Architects  
Rudy Luther Toyota

# Corporate & Foundation Donors

St. Paul Saints  
Sam's Club  
Richard M. Schulze Family Foundation  
Sentryz Market  
Seven Star Enterprises, International  
Shaw's Bar & Grill  
Snap Fitness  
Sojos  
Spring Street Tavern  
Stages Theatre Company  
Sterling Housing Corporation  
Surlly Brewing Company (Tegra Group)  
Tactile Medical  
Tankenoff Families Foundation  
Target  
Telecom Pioneers  
Thiele Technologies

Three Rivers Park District  
Tin Whiskers Brewing Company  
Tiny Acorn Portraits  
Tony Jaros Rivergarden  
Treadle Yard Goods  
TruStone Financial Federal Credit Union  
UCare  
Union Bank & Trust  
United Health Foundation  
University of Minnesota Basketball  
UTU Local 650  
Washburn-McReavy  
J.A. Wedum Foundation  
Whole Foods Market  
Whole Kids Foundation  
Xcel Energy

# Community Organizations, Government & Faith Donors

Benevity Community Impact Fund  
Bloomington Kennedy LaCrosse  
Calvary Baptist Church  
Camp Nebagamon Scholarship Fund  
Delta Tau Delta  
East Minneapolis Exchange Club  
East Side Old Timers  
Elim Church  
Empty Bowls  
Feeding Children Everywhere  
Girl Scout Troop 13533  
Goldbricks Club Incorporated  
Town of Gordon, Wisconsin  
Greater Minneapolis Council of Churches  
Hennepin County Board of Commissioners  
Heritage Academy of Science and Technology  
Holy Cross Catholic Church  
Hunger Solutions Minnesota  
Islamic Community Center of Minnesota  
Jesus Ministries  
Liberty Diversified

Lions Club of Northeast Minneapolis  
Lions Foundation of Northeast Minneapolis  
Mead Witter Foundation  
Metropolitan Area Agency on Aging  
Metropolitan Regional Arts Council  
Minnesota Department of Employment & Economic Development  
Minneapolis City of Lakes Rotary  
Minneapolis Menagerie Rugby Club  
Minneapolis Public Housing Authority  
National Night Out  
Northeast Minneapolis Kiwanis Club  
Northeast Minneapolis Chamber of Commerce  
Plymouth Congregational Church  
Prospect Park Co-op Legacy Fund  
Prospect Park United Methodist Church  
St. Boniface Catholic Church  
St. Frances Cabrini Church  
St. Mary's Orthodox Cathedral  
St. Mary's Women's Club  
Waite Park Commons



THANK YOU FROM EVERYONE AT EAST SIDE!





East Side Neighborhood Services, Inc.  
1700 Second Street NE • Minneapolis, MN 55413  
(612) 781-6011 • [www.esns.org](http://www.esns.org)

Helping individuals, strengthening families, building community.



### **East Side Neighborhood Services - Main Building**

• Administration • Northeast Child Development Center • Youth Development Programs • Senior Community Service Employment Project  
• Senior Transportation • Menlo Park Academy • Adult Employment and Training • Family Services • Senior Programs - EVA

### **Camp Bovey**

Located in the Northwoods of Wisconsin  
(612) 787-4030

### **Adult Day at Friendship Center**

1717 Second Street NE, 55413  
(612) 781-2052

### **The Senior Food Shelf**

1801 Central Avenue NE, 55418  
(612) 788-9521

### **High-Rise Mobile Food Shelf**

554.8th Avenue N, 55411  
(612) 340-9694

### **Glendale Food Shelf**

92 Saint Mary's Avenue SE, 55414  
(612) 342-1954

### **Luxton Community Center**

112 Williams Avenue SE, 55414  
(612) 331-8678

### **Pratt Community School**

66 Malcolm Avenue SE, 55414  
(612) 668-1122

### **Venture Academy**

315 27th Avenue SE, 55414  
(612) 345-9040

### **NE Neighborhood Early Learning Center**

342 13th Avenue NE, 55413

### **Heritage Academy School**

1042 18th Avenue SE, 55414  
(612) 355-5570

### **Edison High School**

700 22nd Avenue NE, 55418  
(612) 788-4881